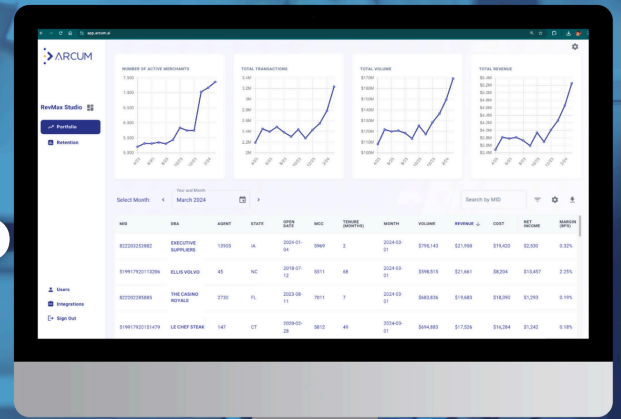
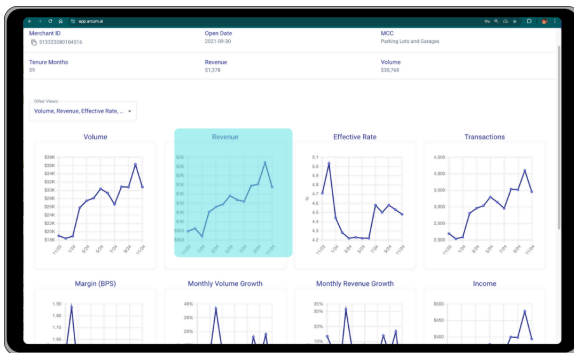


Streamline Reporting, Empower Your Team, Optimize Your Portfolio Save Time.



The RevMax Studio **Portfolio Manager** gives you increased and enriched visibility into your portfolio’s performance and eliminates manual reporting. Armed with actionable data, you gain deeper insights into trends, opportunities, and risks across every level of your portfolio. By automating key processes, the Portfolio Manager frees your team to focus on high-value activities that drive growth and success.



Automated Reporting That Saves Time

No more hours spent creating custom reports. Arcum Portfolio Manager aggregates and organizes your data automatically, delivering ready-to-use insights at both portfolio and merchant levels. Free your team from spreadsheets and redirect their efforts toward driving results.

Comprehensive Metrics at a Glance

Gain instant access to 12 months of portfolio-wide metrics in an intuitive dashboard. With no need to manually compile data, you can get a clear, actionable view of performance trends in seconds.

Merchant-Level KPI Tracking & Insights

Drill down to individual merchant KPIs for a detailed view of their performance over the past 12 months. Identify growth opportunities, mitigate risks, and tailor your strategies with confidence—all without the need for manual data extraction.

Advanced Customer Segmentation

Leverage powerful segmentation tools to analyze your customer base by size, profitability, growth rate, account tenure, and more. These insights enable you to target key segments with precision, improving retention and growth.

“Arcum has greatly improved our ability to design win-back campaigns, analyze retention thresholds across reseller channels, and gain deeper insights into our portfolio.”

This partnership has had a substantial impact on our operations.”



Ashvin Dhawan
CRO
Volt Merchant Solutions

Contact us to get started: info@arcum.ai or call (404) 981-5839